

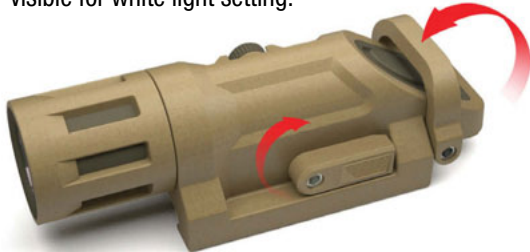
# INFORCE WML, WHITE/IR MULTI-FUNCTION WEAPON MOUNTED LIGHT

# INFORCE®

The INFORCE WML White/IR produces 125 lumens of penetrating white light with a tight beam for close- to mid-range applications and balanced peripheral light for discernment of the surrounding area. Features field-programmable white light intensities –from high-to-low or low-to high – plus a strobe that is easily disabled. A thumb-action twist of the mode selection switch provides 75 mW of infrared light, with no need of IR filters. Its angled activation button is comfortable to operate without interference of wires from tape switches. Manufactured of fiber composite, the INFORCE WML White/IR is ultralight and durable; its patented venting system reduces heat for better LED performance. Superior LED technology within is virtually indestructible. O-rings seal the light to protect it from water, dust and dirt, even under extreme conditions. Its integrated NAR/MIL-STD-1913 rail-compatible mounting system is compact and secure; no tools are required. Two distinct easy-to-use locking systems are incorporated to avoid accidental discharge.



LED selection lever pointing forward with the white dot visible for white light setting.



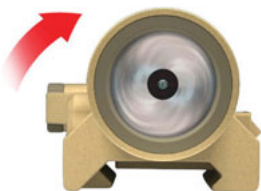
- LED selection lever pointing toward the back of the light for IR setting; no filters required.
- Safety lever shown in lockout position.



- Integrated NAR/MIL-STD-1913 rail compatible clamp/locking system.
- No tools required.



- Secondary lockout system: rotate the head.
- Head removes for battery replacement.



Pivoting clamp securely fastens the NAR/MIL-STD-1913 rail compatible mounting system.

**WHITE LIGHT OUTPUT:**  
High Setting: 125 lumens  
Low Setting: 30 lumens

**RUN TIME:**  
High Setting: 2h  
Low Setting: 10h

#### MULTI-FUNCTION BUTTON / ACTIVATION SWITCH FEATURES:

- Constant and Momentary High and Low plus Strobe
- Reversible High/Low to Low/High Capability
- Strobe Disable
- Constant High and Low
- Momentary High

**IR OUTPUT: 850 nm**  
High Setting: 75 mW  
Low Setting: 25 mW

**RUN TIME:**  
High Setting: 3h 30min  
Low Setting: 17h

**INTEGRATED MOUNTING SYSTEM** is compact, convenient, and secure. NAR/MIL-STD-1913 rail compatible. No tools needed.

**ANGLED ACTIVATION SWITCH** is comfortable and easy to operate without interference of wires from tape switches.

#### (2) LOCKOUT SYSTEMS:

- Safety Lever
- Head Rotation

Bezel Diameter: 1 in. / 2.54 cm.

Length: 4.1 in. / 10.414 cm.

Weight: 3 oz. / 85.048 g.

(1) Lithium 123A Battery Included

**Additional Features and Benefits:**

FIBER COMPOSITE BODY is ultralight and durable.

PATENTED HEAT-RELEASING VENTS maximize LED performance and keep the light cool.

HIGH EFFICIENCY EMITTERS provide longer run times and are virtually immune to failure.

HIGH-IMPACT WINDOW

WATERPROOF to 66 feet.

**Color Availability:**



Desert Sand



Black

**Simple to operate, the INFORCE WML adapts to your preferred shooting style.**



**CAUTION:** Do not use counterfeit or inferior-quality batteries, as they do not meet safety and performance standards and have been the cause of personal and property damage. To ensure safety and performance, the purchase of established brands, such as Duracell®, Energizer® or Panasonic® is recommended.

ITEM NUMBER	BODY COLOR	LED
INF-WML-B-WIR	Black	White/IR
INF-WML-S-WIR	Desert Sand	White/IR

©2011 Emissive Energy Corp. An ISO 9001:2008 Certified Company.  
 135 Circuit Drive, North Kingstown, RI 02852; Tel: 401-294-2030; Fax: 401-294-2050; [www.inforce-mil.com](http://www.inforce-mil.com)

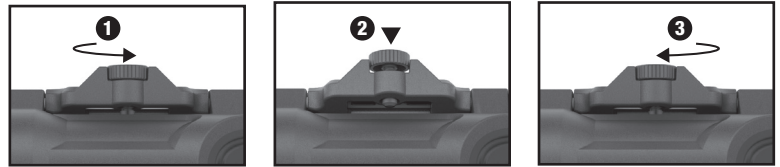
INFORCE and EMISSIVE ENERGY are registered trademarks of EMISSIVE ENERGY CORP. The distinctive shapes, styles, packaging configurations and overall appearances of all INFORCE flashlights and lighting products are trademarks of EMISSIVE ENERGY CORP. Manufactured under one or more of the following U.S. and/or international patent numbers: 6,966,677; 7,121,680; 7,153,004; 7,652,303; D526,730; D565,220; D596,329. European 467295-0001; 467295-0002. Other U.S. and International patents are pending.

Designed and assembled in the U.S.A. of domestic and foreign components. This product qualifies as "American Made" under the Buy America Act.

## INFORCE WML MOUNTING SYSTEM – PATENT PENDING

### TO ATTACH THE LIGHT

1. Loosen the screw.
2. Press on the clamp to open its jaw and attach the light to the rail.
3. Finger tighten the screw; no tools are required.



### TO REMOVE THE LIGHT

Loosen the screw, apply pressure to the clamp and remove the light from the rail.

## INFORCE WML OPERATING SYSTEM

Your INFORCE WML has a new, patent pending multifunction switch with constant and momentary high and low functions plus a strobe mode. It also gives you the ability to disable the strobe feature and reverse the sequence of high/low setting to low/high at the first press of the button/pressure switch. For models with both white light and IR capabilities, when the lever is pointing forward with the white dot visible, the light will produce a white beam. When it is pointing toward the back of the light, it is set to infrared mode.

### WHITE LED SWITCH OPERATION – Lever pointing forward, white dot visible (A)

- For **momentary** mode, press and hold the button/pressure switch for more than 1/2 second; when released, the light will turn off.
- For **high** power mode, press the button/pressure switch once. If high power is on for more than 2 seconds, the next press of the button will turn the light off.
- For **low** power mode, press the button/pressure switch twice in two seconds.
- For **strobe** mode, two quick presses of the button/pressure switch when in high power, low power or off settings will activate the strobe.



LED Lever Operation: Position (A), White Light

### TO DISABLE THE STROBE FUNCTION

1. Unscrew the light head one revolution to the lockout position.
2. Press and hold the button/pressure switch.
3. While holding the button/pressure switch, tighten the head and then release the button. The strobe feature is now disabled.
4. To reactivate the strobe function, repeat steps 1, 2 and 3.

### TO REVERSE THE WHITE LIGHT POWER SEQUENCE

The white light feature has been set to high/low power sequence as a default. To reverse the order to low/high sequence:

1. Press the button/pressure switch twice to activate the low power setting.
2. Press and hold down the button/pressure switch for approximately 5 seconds. The light will turn off and then blink three times; the default will change from high/low to low/high sequence. Release the button.
3. To return the setting to high/low power sequence, return to the low power setting and repeat step #2.

## INFRARED LED SWITCH OPERATION – PATENT PENDING

### Lever pointing to the back of light, white dot not visible (B)

Infrared mode has no strobe, nor does it have the ability to change the light from high/low to low/high setting. The IR mode has high and low power modes which are set in permanent high/low sequence. Operation of IR settings are identical to the white switch operation:

- For **momentary** mode, press and hold the button/pressure switch for more than 1/2 second; when released, the light will turn off.
- For **high** power mode, press the button/pressure switch once. If high power is on for more than 2 seconds, the next press of the button will turn the light off.
- For **low** power mode, press the button/pressure switch twice in two seconds.



LED Lever Operation: Position (B), IR

## LOCKOUT SYSTEMS

Two distinct lockout systems have been incorporated to avoid accidental discharge when carrying the light:

Option 1. A patent pending safety lever to protect the activation button. Simply lift the lever to cover the button/pressure switch when not in use and lower the lever for light activation.

Option 2. Lock out by unscrewing the light head one revolution.



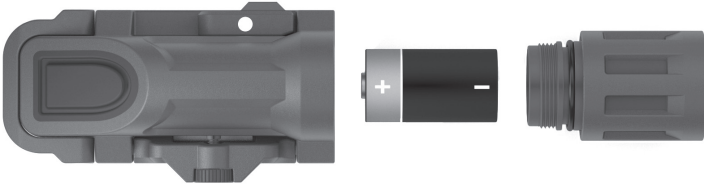
Safety Lever and Head Lockout Systems

## BATTERY REPLACEMENT

Your INFORCE WML light comes with one high-efficiency 123A Lithium battery.

To insert the battery:

1. Unscrew the head to remove it from the body.
2. Insert the battery into the open body, positive (+) end first.
3. Re-thread the head onto the body.



## CAUTION:

Lithium batteries can explode or cause burns if recharged, shorted, disassembled or exposed to water, high temperatures or fire. Please follow the manufacturer's guidelines for safe storage, use and disposal.

If the light has been submerged, dry the exterior of the light prior to replacing the batteries. Fresh and salt water will damage internal electronics and batteries.

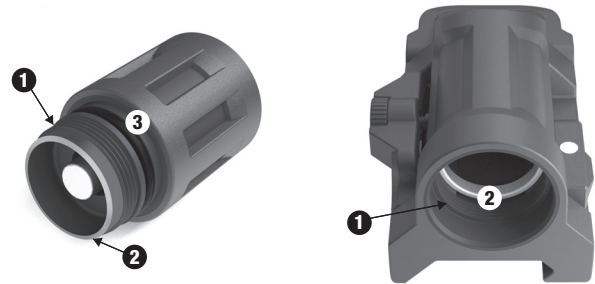
**Do not use counterfeit or inferior-quality batteries, as they do not meet safety and performance standards and have been the cause of personal and property damage. To ensure safety and performance, the purchase of established brands, such as Duracell®, Energizer® or Panasonic® is recommended.**

Notes:

- Batteries can leak and may cause damage to the inside of the light. Remove the battery if the light will be stored for more than 2 weeks.

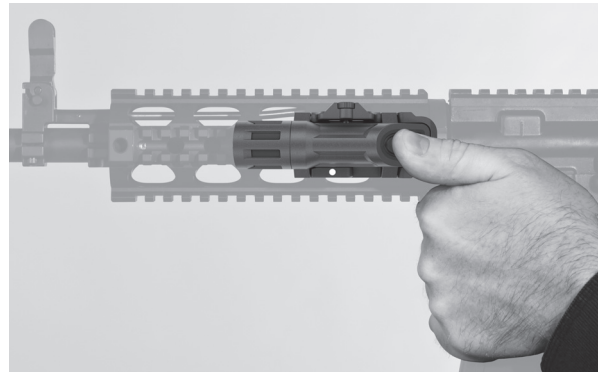
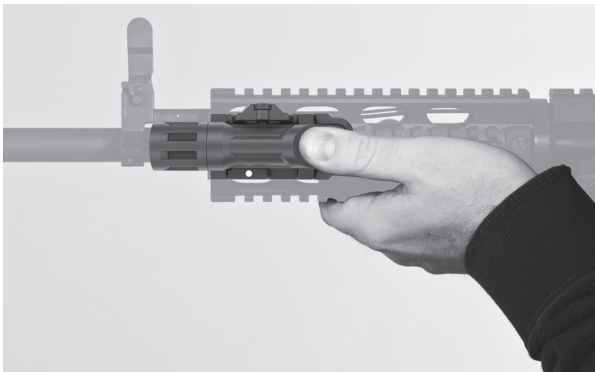
## MAINTENANCE/CLEANING INSTRUCTIONS

Your INFORCE WML light has been designed to provide maximum performance with minimum maintenance. Occasionally clean (1) threads, (2) head and internal contact surfaces with alcohol swab and apply a thin coat of silicon-based lubricant to the (3) rubber O-ring; see illustration. Do not use a petroleum-based lubricant. Should the light become dirty from dust, sand or caked-on mud, rinse the fully assembled light with water and dry with a soft cloth.



## THE LIGHT THAT FITS THE WAY YOU SHOOT.

The INFORCE WML is simple, lightweight and operable without attachments while adaptable to your preferred shooting profile. The built-in rail interface keeps it compact; its angled button/pressure switch is easy to use without interference of wires from tape switches. The WML functions as an extended part of your hand.



© 2011 Emissive Energy Corp.

Emissive Energy Corp., 135 Circuit Drive, North Kingstown, RI 02852 USA; Tel: 401-294-2030; Fax: 401-294-2050; [www.inforce-mil.com](http://www.inforce-mil.com)

INFORCE and EMISSIVE ENERGY are registered trademarks of EMISSIVE ENERGY CORP. The distinctive shapes, styles, packaging configurations and overall appearances of all INFORCE flashlights and lighting products are trademarks of EMISSIVE ENERGY CORP. Manufactured under one or more of the following U.S. and/or international patent numbers: 6,966,677; 7,121,680; 7,153,004; 7,652,303; D526,730; D565,220; D596,329. European 467295-0001; 467295-0002. **Other U.S. and International patents are pending.**

Designed and assembled in the U.S.A. of domestic and foreign components. This product qualifies as "American Made" under the Buy America Act.